



VÄRSKA ORIENTEERUMISKLUBI
XXIII PEKO KEVAD 12th-13th April 2014
Korsapalo

Programme:

Saturday 12th April – Long distance, first start at 13.00

Sunday 13th April – Shortened long distance (middle distance in MN21A), first start at 10.00

Terrain and map:

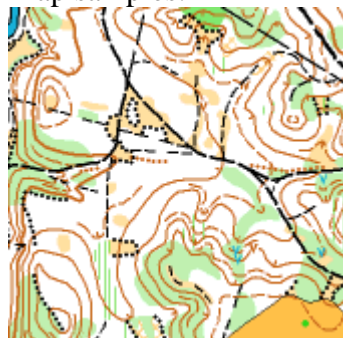
Pine and spruce forest with good and very good visibility and runnability. Forest covers approximately 90% of the terrain. The slopes of the river of Piusa are steep and with many deep depressions. The other part of the terrain is mainly flat area with marshes and swamps. Between these two areas there is a detailed part with more difficult microrelief. Dense network of paths and roads.

Elevation difference throughout the map is 57m, biggest slope is 35m.

Map scale 1:10000, contour interval 5 m, size A4

Map author: Markus Puusepp

Map samples:



Location:

Competition centre is in village Väiko- Härma. Route markings from village Obinitisa and along Obinitisa-Võru road in village Antkruva.

Competition centre location link:

<http://kaart.postimees.ee/?zoom=5&lat=6408468.75&lon=702617.1875&layers=B00TTT&id=&id=71573>

Classes:

MN 8 - marked course; MN 10 - marked course; MN 12; MN 14; 16; 18; 21A; 21B;
35; 40; 45; 50; 55; 60; 65; 70

Open course

M - men, N - women

Marked course - course is marked on the terrain with plastic ribbon and drawn on the map, but marking is not following the fastest route from control to control.

MN 8, 10 competitors will get their map 1 minute before the start.

Courses:

Class	Course length	
	1st day	2nd day
1 M21A	12,0	6,5
2 M35	9,5	8,0
3 N21A	9,0	5,5
4 M18, M40	8,0	7,0
5 M16, M21B, N18	6,5	5,5
6 M45, M50	6,0	5,0
7 N35, N40, M55, M60	5,5	4,5
8 N45, N50, M65, N21B	4,5	4,0
9 M14, N16	4,0	3,5
10 N55, N60, M70	3,5	3,0
11 N14, N65	3,5	3,0
12 N70	3,0	2,5
13 MN 12	2,5	2,0
14 MN 8NR, MN 10NR	1,7/2,5	1,5/2,2
15 Open course	5,0	4,0

Entry fees:

MN 8-14	3 EUR per day
MN 16-18, 60, 65, 70	4,5 EUR per day
MN 21-55	7 EUR per day
Open course	4 EUR per day

Registration:

On the webpage www.osport.ee or e-mail raul48@hotmail.ee

Entry fee must be transferred to Väraska Orienteerumisklubi PEKO account IBAN EE242200001120074669 Swedbank.

Entry deadline 07.04.2014

Latecomers have double entry fee.

Electronic punching:

SportIdent electronic timing is used. SI cards will be available for hire at the event centre. The hire charge is 1 EUR per day.

Accommodation: Preorder

Värška Sanatorium (hotel)	www.spavarska.ee	796 4666
Hirvemäe Holiday Centre	www.hirvemae.ee	79 76105
Piusa Ürgoru Holiday Centre	http://www.puhkemaja.ee/	
Setomaa Turismitalo	http://www.setotalu.ee/	
Värška Gymnasium (on the floor)	3 EUR per night	53453331

Parking:

Close to the competition center. Parking fee 1 EUR.

Washing and toilets:

There is a warm outdoor shower and toilets in competition centre.

Catering:

There is a buffet in the competition center.

Finish:

Water will be provided in the finish.

Prizes:

To the best runners in each class according to the sum of the results over two days.
MW 8; 10 - small prize for all participants.

Head organizer: Raul Kudre
Course planner: Markus Puusepp
www.peko.ee

Sponsors:

VÄRSKA VALD



EESTI KULTUURKAPITAL